

RECYCLABLES ONLY

PLASTICS



- » Containers #1 thru #7
- » Bottles (leave on lids)
- » Milk jugs & laundry bottles
- » Dairy tubs & lids
- » Deli & berry containers
- » Clamshell plastic packaging

PAPER



- » Cardboard
- » Mail
- » Cartons (leave on lids)
- » Magazines
- » Newspaper & inserts
- » Office paper

METAL



- » Aluminum cans & pans
- » Steel & tin cans
- » Pots & pans
- » Empty aerosol cans
- » Small metal appliances

GLASS

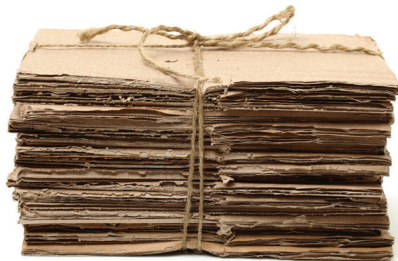


- » Bottles – remove caps
- » Jars – remove lids

NO

- Trash
- Diapers
- Electronics
- Fluorescent bulbs & tubes
- Tangling items (rope, hoses, loose plastic sheets, etc.)
- Coffee pods

TOO MUCH CARDBOARD?



- » Option 1: Flatten all boxes, bundle into 3' x 3' squares, & set next to cart
- » Option 2: Take cardboard to drop-off site

CART RULES

- » Recyclables should be clean and dry.
- » Recyclables should be loose in the cart.
- » Keep cart lid closed when out for collection.
- » Cart should be placed 4 feet away from obstructions.



- » Streets West, 608-266-4681
- » Streets East, 608-246-4532
- » streets@cityofmadison.com
- » www.cityofmadison.com/recycling

